



Thursday, March 31, 2022

13:00 - 13:05

Introduction

13:05 - 13:25

Know Your Risk of Fracture Before it Happens - Role of Dual Energy X-Ray Absorptiometry

*Dr. Mairah Razi*

*Consultant Nuclear Physician*

*Shaukat Khanum Memorial Cancer Hospital & Research Centre, Lahore*

13:25 - 13:45

DXA Scan in Cancer Patients

*Dr. Umm e Kalsoom Awan*

*Consultant Medical Oncologist*

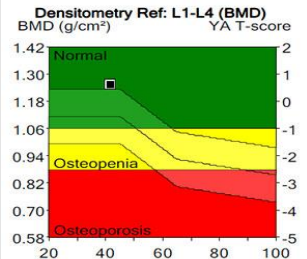
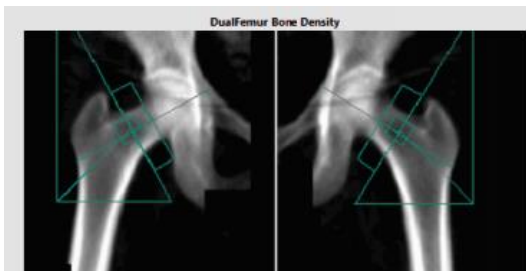
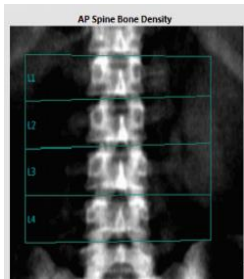
*FCPS Medical Oncology*

*FCPS Internal Medicine*

*Shaukat Khanum Memorial Cancer Hospital & Research Centre, Lahore*

13:45 - 14:00

Questions & Answers



The American Association of Continuing Medical Education accredits this educational activity for a maximum of 1.50 Category 1 AACME credit hours.