

# ANNUAL CANCER REGISTRY REPORT-2017, OF THE SHAUKAT KHANUM MEMORIAL CANCER HOSPITAL & RESEARCH CENTER, PAKISTAN

Shahid Mahmood, Raqib Faraz, Aneel Yousaf, Ain ul Quader, Hina Asif, Adna Atif, Lubna Nadeem, Natasha Parveen, Farhana Badar.

## CANCER STATISTICS

This report includes patients registered at the centers affiliated with the Shaukat Khanum Memorial Trust and accessioned into the hospital information system in Lahore. The affiliated centers include two hospitals called the 'Shaukat Khanum Memorial Cancer Hospital and Research Center' (SKMCH&RC) in Lahore and Peshawar and the Karachi Diagnostic Center (KDC). SKMCH&RC Lahore is the oldest center and has been functioning since December 29, 1994, SKMCH&RC Peshawar since December 29, 2015, and the KDC since 2010. For the purpose of presenting the results, all of these centers are referred to as SKMCH&RC/hospital in this report.

### Distribution of neoplasms

Of a total of 6,439 new neoplasms diagnosed or treated at the aforementioned facilities in Pakistan, from January 1, 2017 to December 31, 2017, 2,979 were seen in male (46.26%) and 3,460 (53.74%) in female patients. Five-thousand, eight-hundred and eighty-two (5,852 (90.88%)) neoplasms were found in adults, whereas, 587 (9.12%) were seen in children. Children were classified as those 18-years or less and adults as more than 18-years of age. Table 1 shows the stratification of cases by behavior and age-group.

**Table 1. Distribution of neoplasms by behavior and age-group, from Jan. 2017 to Dec. 2017.**

<b>Behavior</b>	<b>Age-group</b>	<b>Registered patients (6207)</b>	<b>Reported neoplasm* (6,439)</b>
<b>Malignant<sup>†</sup></b>	Adults	5378	5,433
	Pediatrics	563	563
	Total	5941	5,996
<b>Benign<sup>‡</sup> &amp; Uncertain Behavior</b>	Adults	371	419
	Pediatrics	21	24
	Total	392	443

\* The difference in the number of registered patients and reported neoplasms is attributed to multiple malignancies and benign neoplasms diagnosed in 55 and 51 patients, respectively. Further, 126 patients have both malignant and benign neoplasm simultaneously.

<sup>†</sup> Cases with behavior code /3 and /2 are considered as malignant cases.

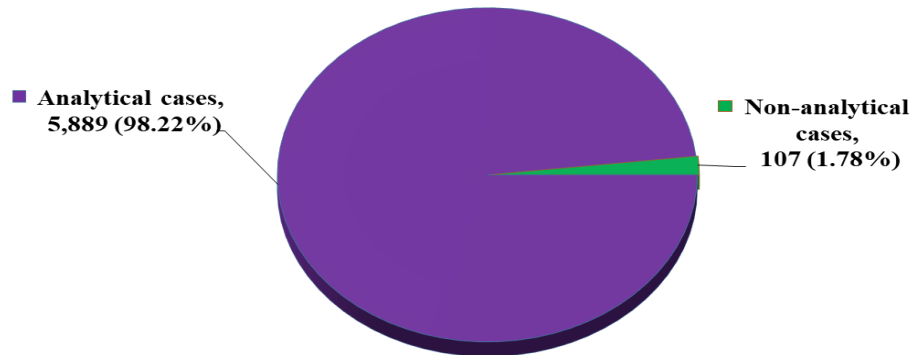
<sup>‡</sup> Cases with behavior code /0 and /1 are considered as benign and uncertain, respectively.

<sup>§</sup> According to the Facility Oncology Revised Data Standards (FORDS), Revised for 2004, Class of Case 0 to 2 are analytical cases and included in treatment and survival analysis, whereas, Class of Case 3 to 9 are non-analytical cases, usually not included in routine treatment or survival statistics.

## Class of Case

Of a total of 5,996 malignant cases recorded in the Registry from January 2017 to December 2017, 5889 (98.22%) were analytical cases and 107 (1.78%) non-analytical. Figure 1 shows the stratification of analytical and non-analytical cases<sup>¥</sup>.

**Figure 1. Stratification of analytical and non-analytical cases, from Jan. 2017 to Dec. 2017.**



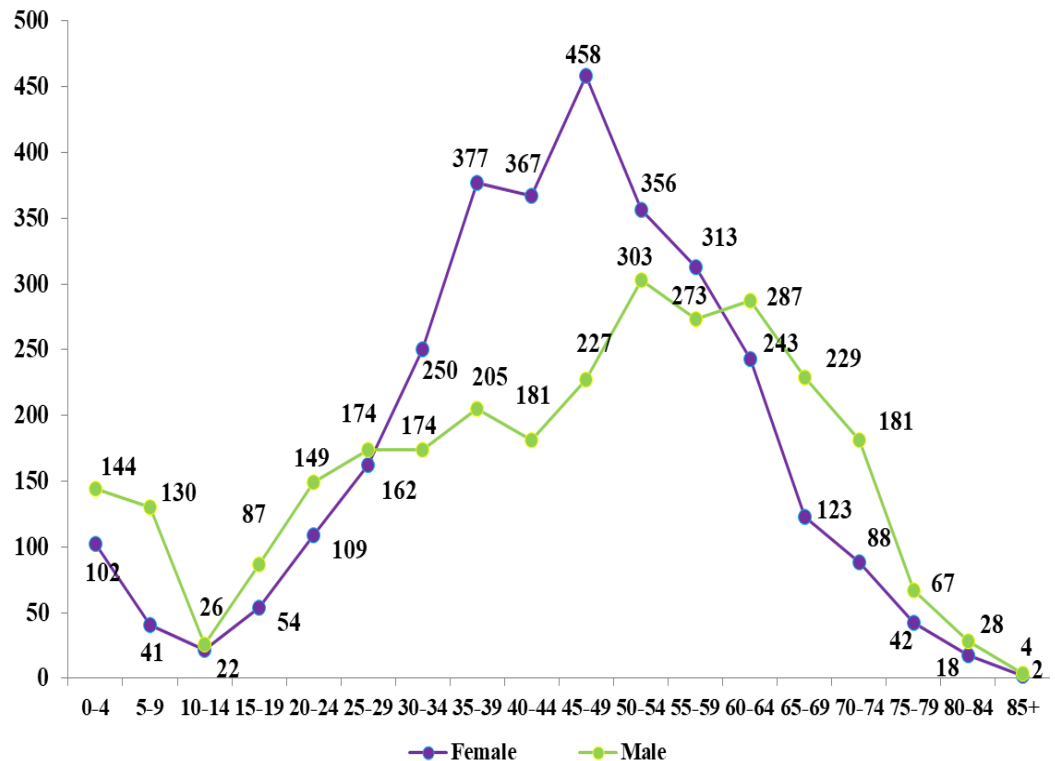
Data Source: Cancer Registry & Clinical Data Management, SKMCH&RC

## Distribution of malignancies

In the year 2017, a total of 5,996 malignancies were diagnosed at the hospital with 3,127 seen amongst females and 2,869 amongst males. Table 2 displays the distributions of female and male patients according to gender and age-group.

Table 2 and figure 2. Distribution of cancer cases by gender and age-group (yrs.), from Jan. 2017 to Dec. 2017.

Age-range	Female	Male	Total
0-4	102	144	246
5-9	41	130	171
10-14	22	26	48
15-19	54	87	141
20-24	109	149	258
25-29	162	174	336
30-34	250	174	424
35-39	377	205	582
40-44	367	181	548
45-49	458	227	685
50-54	356	303	659
55-59	313	273	586
60-64	243	287	530
65-69	123	229	352
70-74	88	181	269
75-79	42	67	109
80-84	18	28	46
85+	2	4	6
<b>Total</b>	<b>3127</b>	<b>2869</b>	<b>5996</b>



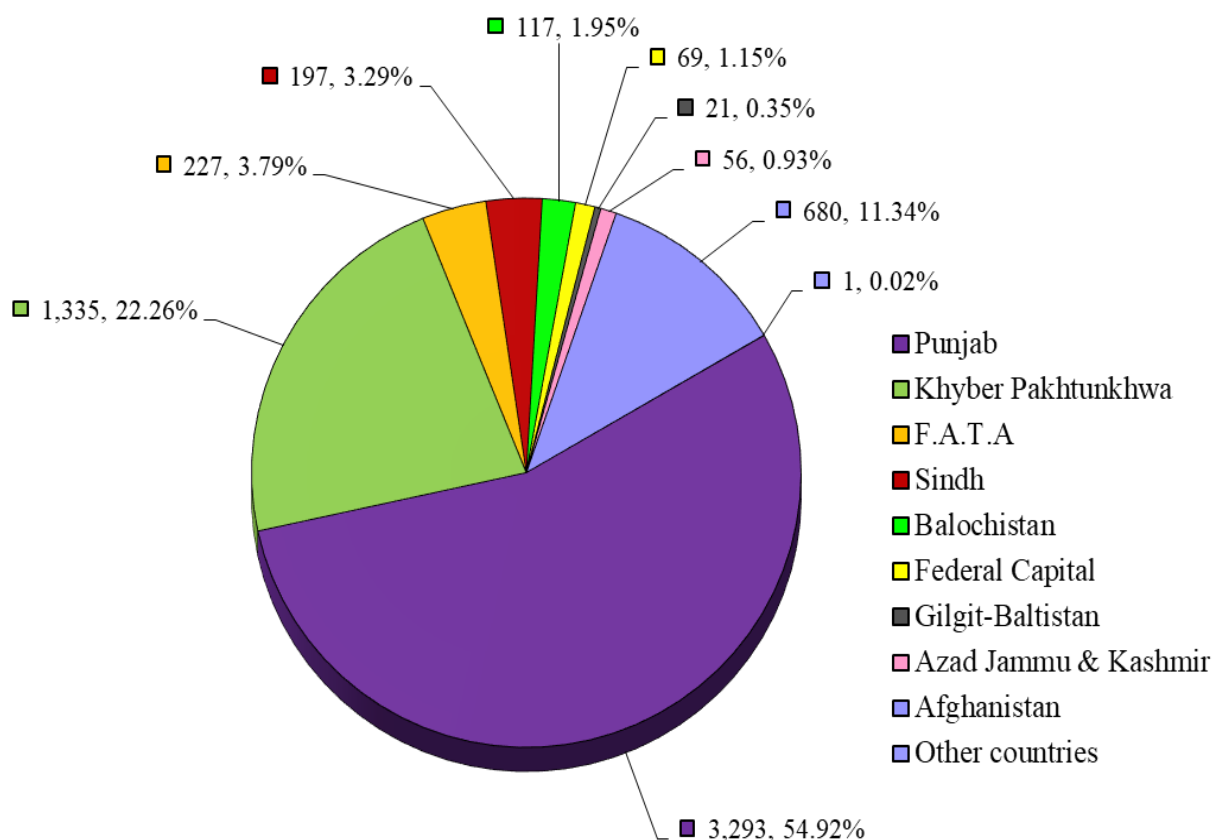
Data Source: Cancer Registry & Clinical Data Management, SKMCH&RC

## Demographics

Of the 5,996 malignant cancers, nearly 54.92% (3,293) belonged to the province of Punjab and approximately 22.26% (1,335) to Khyber Pakhtunkhwa (Table 3). The fact that the geographic area of residence of a vast majority of patients was Punjab can be explained in light of the information that the oldest affiliate is situated in the provincial capital of Punjab and that, this province accounts for almost 50% of the total population of the country.

**Table 3. Distribution of malignancies according to the geographic area of residence of the patients, from Jan. 2017 to Dec. 2017.**

Province/Region	Malignancies	Percentage
Punjab	3,293	54.92
Khyber Pakhtunkhwa <sup>[1]</sup>	1,335	22.26
F.A.T.A	227	3.79
Sindh	197	3.29
Balochistan	117	1.95
Federal Capital	69	1.15
Gilgit-Baltistan	21	0.35
Azad Jammu & Kashmir	56	0.93
Afghanistan	680	11.34
Other countries	1	0.02
<b>Total</b>	<b>5,996</b>	<b>100.00</b>



**Data Source: Cancer Registry & Clinical Data Management, SKMCH&RC**

<sup>[1]</sup> Khyber Pakhtunkhwa formerly known as N.W.F.P

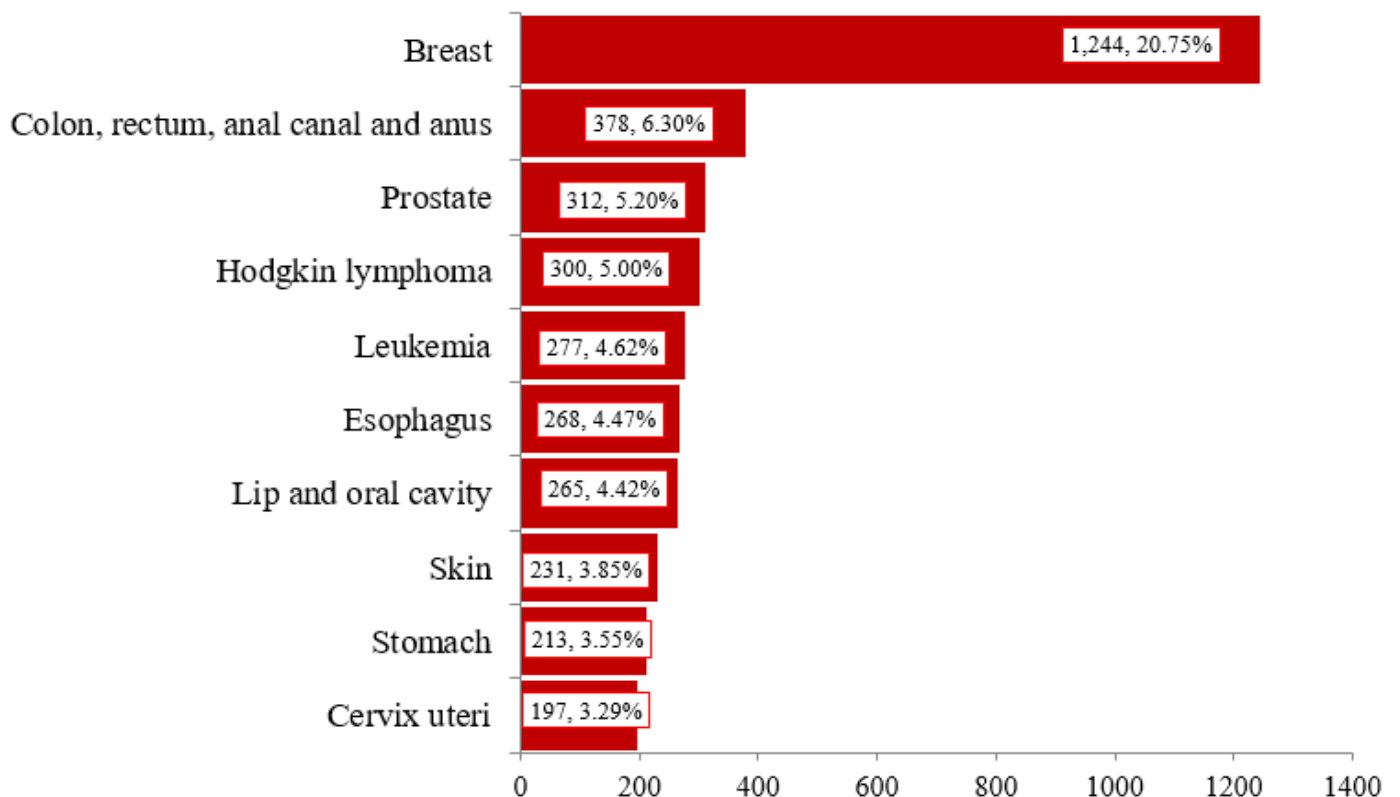
## Top ten cancers

Tables 4 to 8 show the list of the ten commonest malignancies seen at SKMCH&RC during the year 2017. Of a total of 5,996 malignancies, breast cancer was the leading malignancy with 1,244 cases accessioned into the Registry. Cancers of the colon, rectum, anal canal and anus, and prostate were the second and third most frequently seen cancers, respectively.

**Table 4. Top 10 malignancies seen amongst all age-groups, both sexes combined, from Jan. 2017 to Dec. 2017.**

Sr. No.	ICD-O-3 Category	Count	Percentage	ICD-O-3 Code
1	Breast	1,244	20.75	C50.0 - C50.9
2	Colon, rectum, anal canal and anus	378	6.30	C18.0 – C21.8
3	Prostate	312	5.20	C61.9
4	Hodgkin lymphoma	300	5.00	M9650 - M9667
5	Leukemia	277	4.62	M9800 - M9948
6	Esophagus	268	4.47	C15
7	Lip and oral cavity	265	4.42	C00.0 - C08.9
8	Skin	231	3.85	C44
9	Stomach	213	3.55	C16
10	Cervix uteri	197	3.29	C53.0 - C53.9

**Figure 3. Top 10 malignancies seen amongst all age-groups, both sexes combined, from Jan. 2017 to Dec. 2017.**



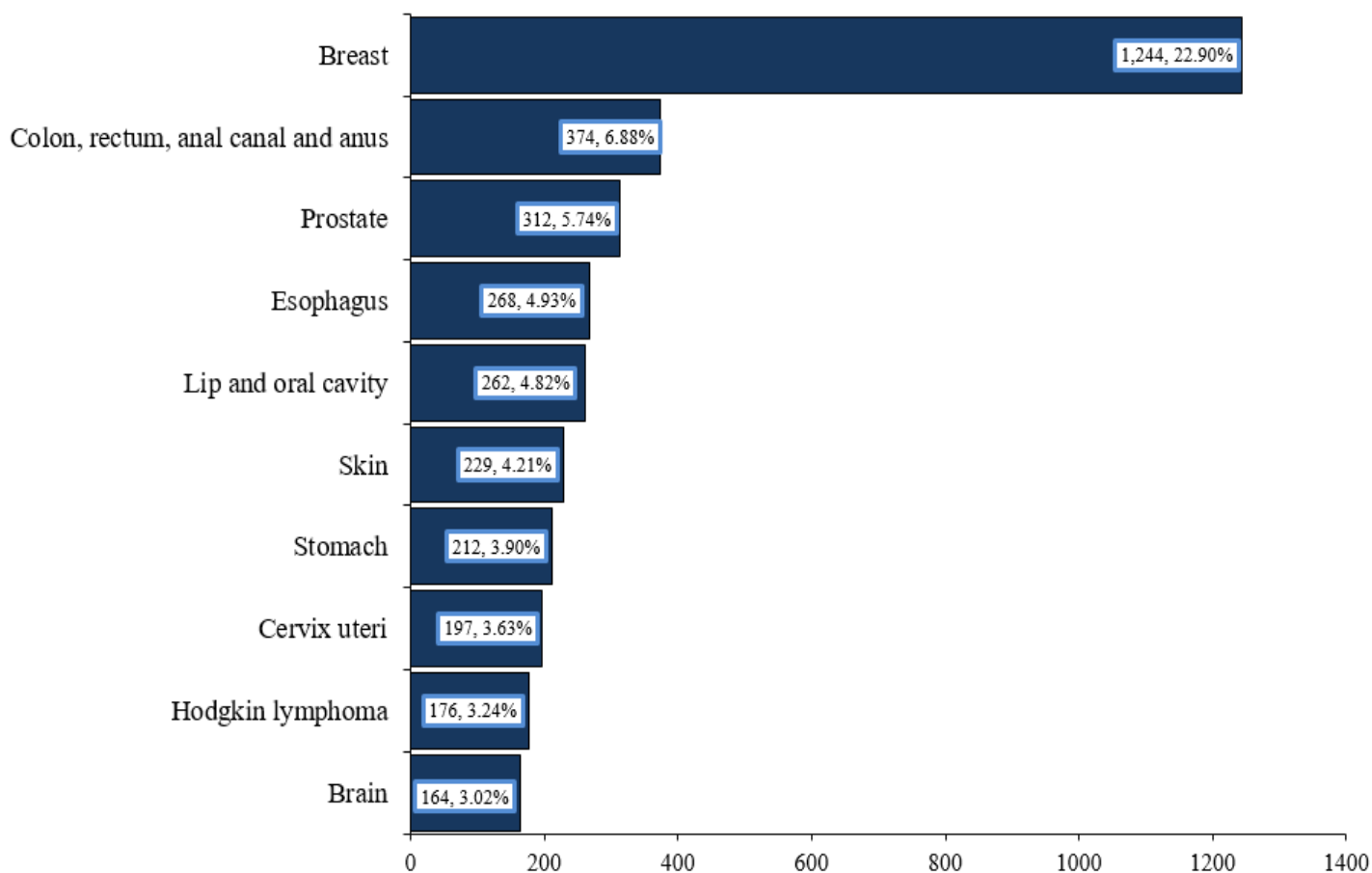
Data Source: Cancer Registry & Clinical Data Management, SKMCH&RC

Amongst adults, during the year 2017, a total of 5,433 malignancies were diagnosed or treated at SKMCH&RC. Cancers of the breast, colon, rectum, anal canal and anus, and prostate were registered as the most frequently seen cancers.

**Table 5. Top 10 malignancies seen amongst adults (> 18 years), from Jan. 2017 to Dec. 2017.**

Sr. No.	ICD-O-3 Category	Count	Percentage	ICD-O-3 Code
1	Breast	1,244	22.90	C50 - C50.9
2	Colon, rectum, anal canal and anus	374	6.88	C18.0 – C21.8
3	Prostate	312	5.74	C61.9
4	Esophagus	268	4.93	C15
5	Lip and oral cavity	262	4.82	C00.0 - C08.9
6	Skin	229	4.21	C44.0 – C44.9
7	Stomach	212	3.90	C16
8	Cervix uteri	197	3.63	C53.0 - C53.9
9	Hodgkin lymphoma	176	3.24	M9650 - M9667
10	Brain	164	3.02	C71.0-C71.9

**Figure 4. Top 10 malignancies seen amongst adults (> 18 years), from Jan. 2017 to Dec. 2017.**



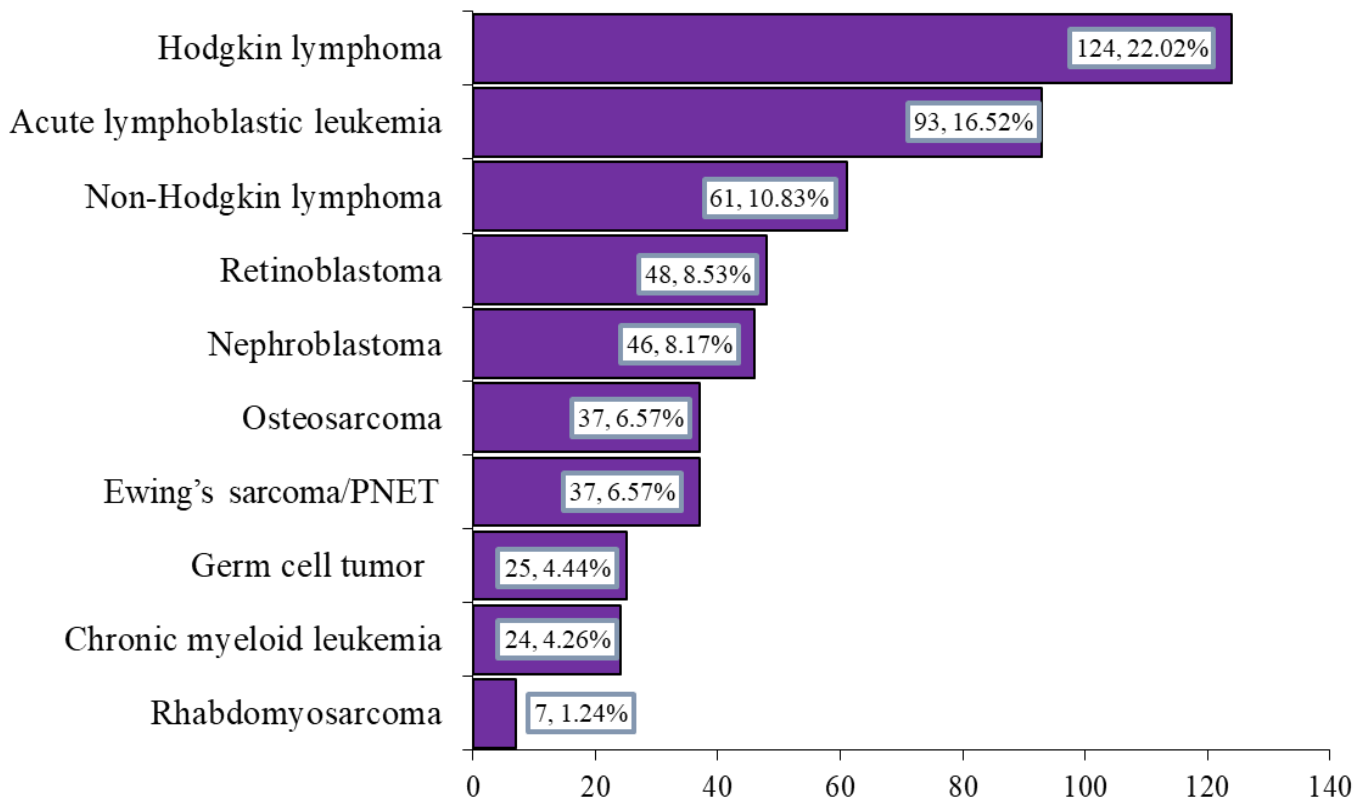
Data Source: Cancer Registry & Clinical Data Management, SKMCH&RC

In 563 childhood malignancies, using the classification based on tumor morphology, Hodgkin lymphoma, acute lymphoblastic leukemia and non-Hodgkin lymphoma were identified as the three most common malignancies diagnosed or treated at SKMCH&RC. Table 6 shows the distributions of the top ten malignancies seen in children at SKMCH&RC.

**Table 6. Top 10 malignancies seen in children (<= 18 years), from Jan. 2017 to Dec. 2017.**

Sr. No.	ICD-O-3 Category	Count	Percentage	ICD-O-3 Morphology Code
1	Hodgkin lymphoma	124	22.02	M9650 - M9667
2	Acute lymphoblastic leukemia	93	16.52	M982 - M983
3	Non-Hodgkin lymphoma	61	10.83	M9590, 91- M967 - 972
4	Retinoblastoma	48	8.53	M9510 - M9514
5	Nephroblastoma	46	8.17	M8960
7	Osteosarcoma	37	6.57	M9180 - M9195
6	Ewing's sarcoma/PNET	37	6.57	M9260
8	Germ cell tumor	25	4.44	M906 - M909
9	Chronic myeloid leukemia	24	4.26	M9863 - M9875
10	Rhabdomyosarcoma	7	1.24	M8900 - M8921

**Figure 5. Top 10 malignancies seen in children (<= 18 years), from Jan. 2017 to Dec. 2017.**



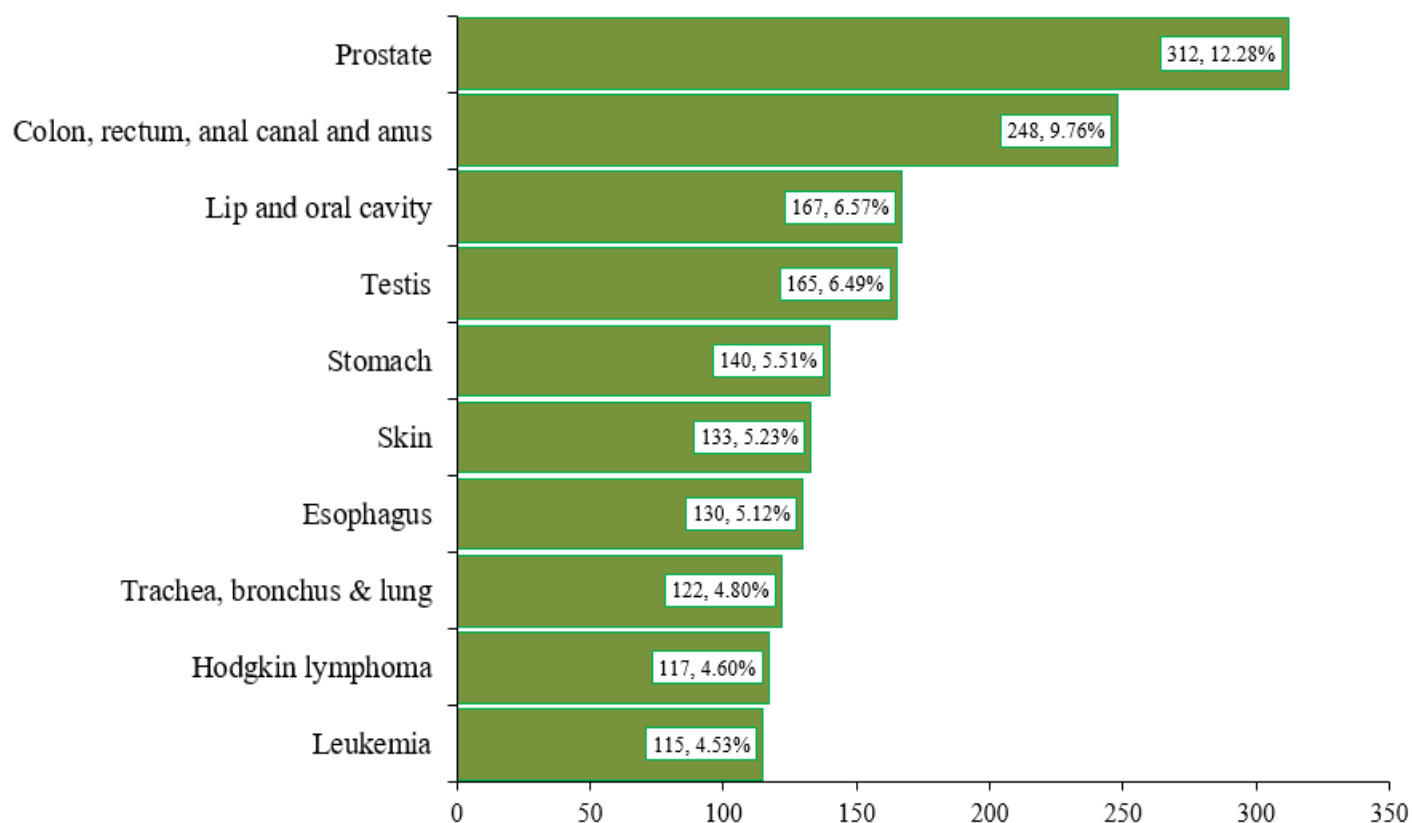
Data Source: Cancer Registry & Clinical Data Management, SKMCH&RC

In adult males (2,541 malignancies), the commonest cancers were those of the prostate, colon, rectum, anal canal and anus, and lip & oral cavity (Table 7).

**Table 7. Top 10 malignancies seen amongst adult males, from Jan. 2017 to Dec. 2017.**

Sr.No.	ICD Category	Count	Percentage	ICD-O-3 Code
1	Prostate	312	12.28	C61.9
2	Colon, rectum, anal canal and anus	248	9.76	C18 - C21.8
3	Lip and oral cavity	167	6.57	C00.0 – C08.9
4	Testis	165	6.49	C62
5	Stomach	140	5.51	C16.1 – C16.9
6	Skin	133	5.23	C44.0 – C44.9
7	Esophagus	130	5.12	C15 – C15.9
8	Trachea, bronchus & lung	122	4.80	C33.9 – C34.9
9	Hodgkin lymphoma	117	4.60	M9650 - M9667
10	Leukemia	115	4.53	M9800 - M9948

**Figure 6. Top 10 malignancies seen amongst adult males, from Jan. 2017 to Dec. 2017.**



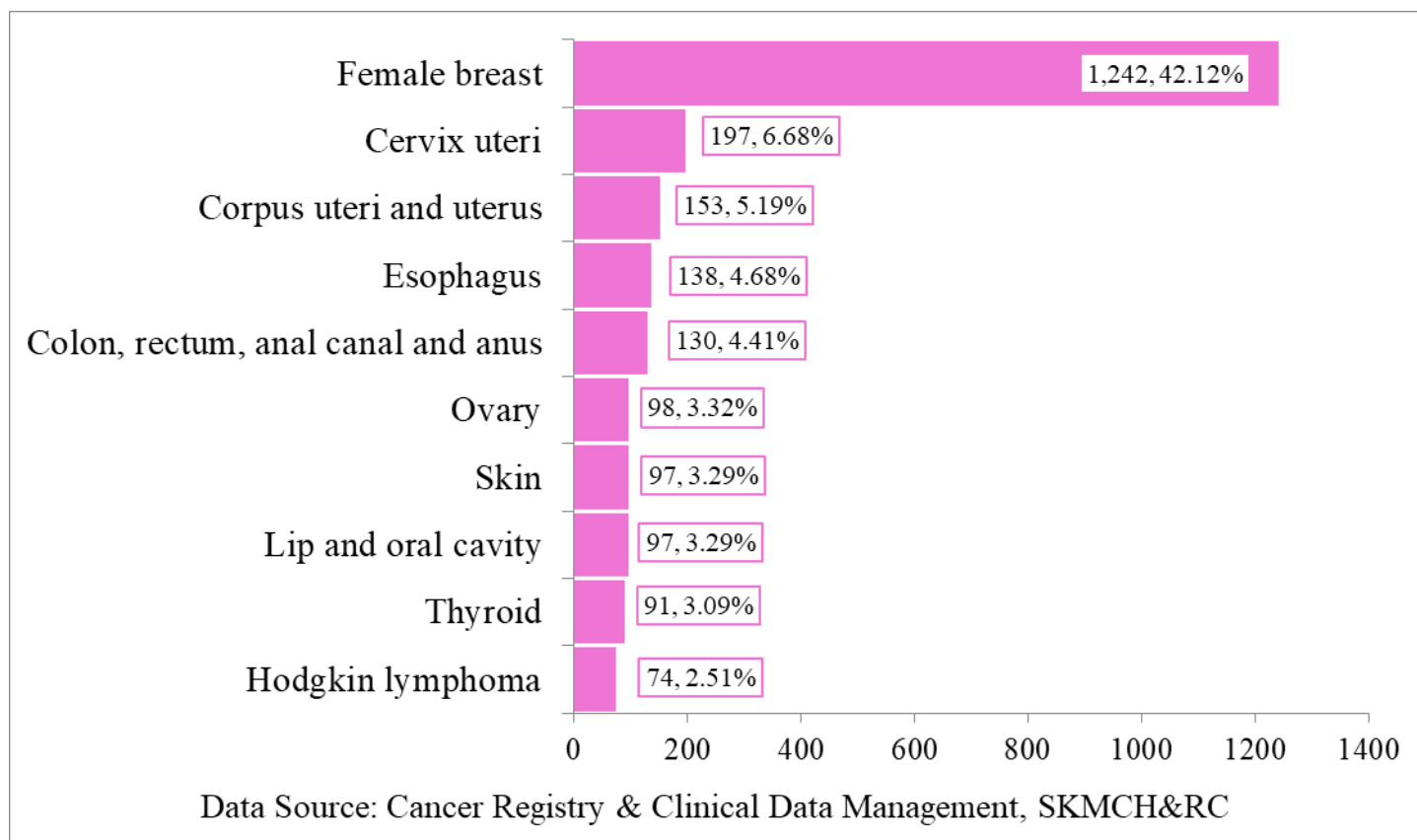
Data Source: Cancer Registry & Clinical Data Management, SKMCH&RC

The most frequent diagnosis in adult women (2,949) was breast cancer accounting for 42.1% of the cancers. Cervix uteri was ranked as the second highest cancer (6.7%) and cancers of the Corpus uteri and uterus as the third common malignancy with 5.2% of the total malignancies, in females.

**Table 8. Top 10 malignancies seen amongst adult females, from Jan. 2017 to Dec. 2017.**

Sr. No.	ICD Category	Count	Percentage	ICD-O 3 Code
1	Female breast	1,242	42.12	C50.0 - C50.9
2	Cervix uteri	197	6.68	C53.0 - C53.9
3	Corpus uteri and uterus	153	5.19	C54.0 – C55.9
4	Esophagus	138	4.68	C15 – C15.9
5	Colon, rectum, anal canal and anus	130	4.41	C18 - C21.8
6	Ovary	98	3.32	C56.9
7	Skin	97	3.29	C44.0 – C44.9
8	Lip and oral cavity	97	3.29	C00.0 – C08.9
9	Thyroid	91	3.09	C73.9
10	Hodgkin lymphoma	74	2.51	M9650 - M9667

**Figure 7. Top 10 malignancies seen amongst adult females, from Jan. 2017 to Dec. 2017.**





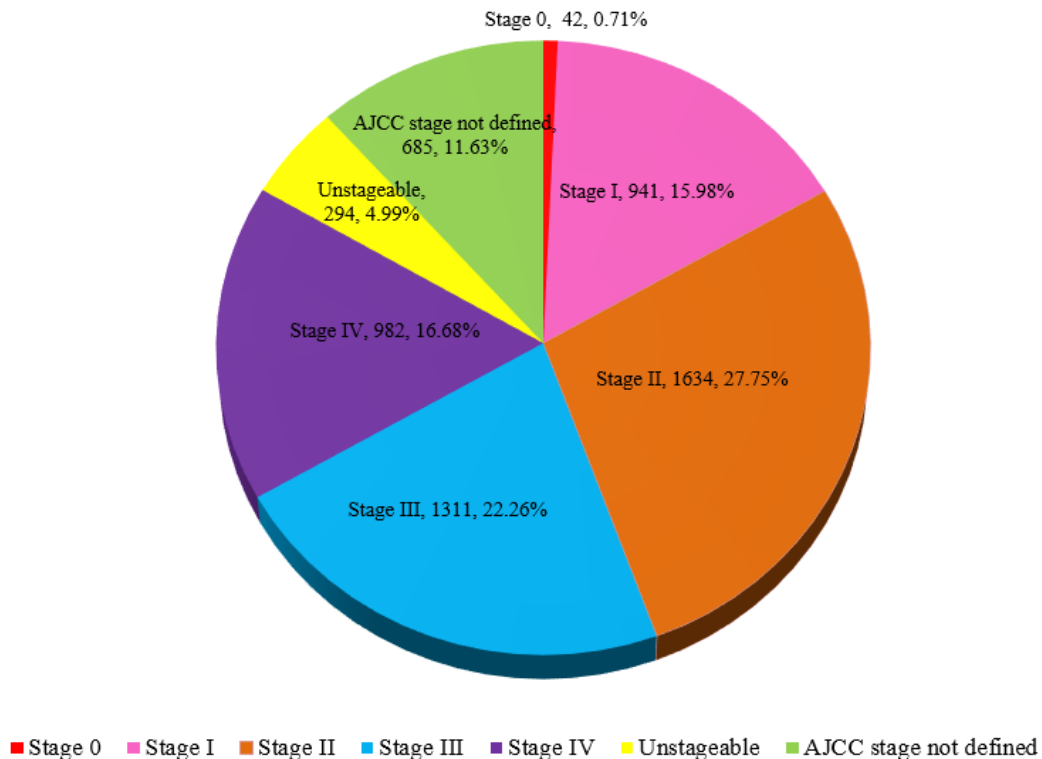
## Staging

The Registry uses the American Joint Commission on Cancer TNM staging system for all analytical cancer cases. TNM categorizes cancers in stages 0, 1, 2, 3, 4, unstageable, and not applicable on all analytical cases (Class of Case 0, 1, 2). Cancers are classified as being unstageable as the patients may choose not to receive any treatment or undergo further tests at the hospital needed to establish an appropriate stage. “Not applicable” means non-availability of AJCC staging for that site. During the year 2017, cancer staging for 5,889 analytical cases (Class of Case 0, 1, 2) showed that 42 (0.71%) cases fell into 0 or in situ category, 941 (15.98%) in Stage I, 1,634 (27.75%) in Stage II, 1,311 (22.26%) cases in Stage III, and 982 (16.98%) in Stage IV, (table 9); 294 (4.99%) cases were unstageable and 685 (11.63%) had no AJCC stage defined for that site.

**Table 9. TNM Stage of cancer patients at SKMCH&RC, from Jan. 2017 to Dec. 2017.**

AJCC Stage	Count	Percentage
Stage 0	42	0.71
Stage I	941	15.98
Stage II	1,634	27.75
Stage III	1,311	22.26
Stage IV	982	16.68
Unstageable	294	4.99
AJCC stage not defined	685	11.63
<b>Total</b>	<b>5,889</b>	<b>100.00</b>

**Figure 8. TNM stage of cancer patients at SKMCH&RC, from Jan. 2017 to Dec. 2017.**



Data Source: Cancer Registry & Clinical Data Management, SKMCH&RC

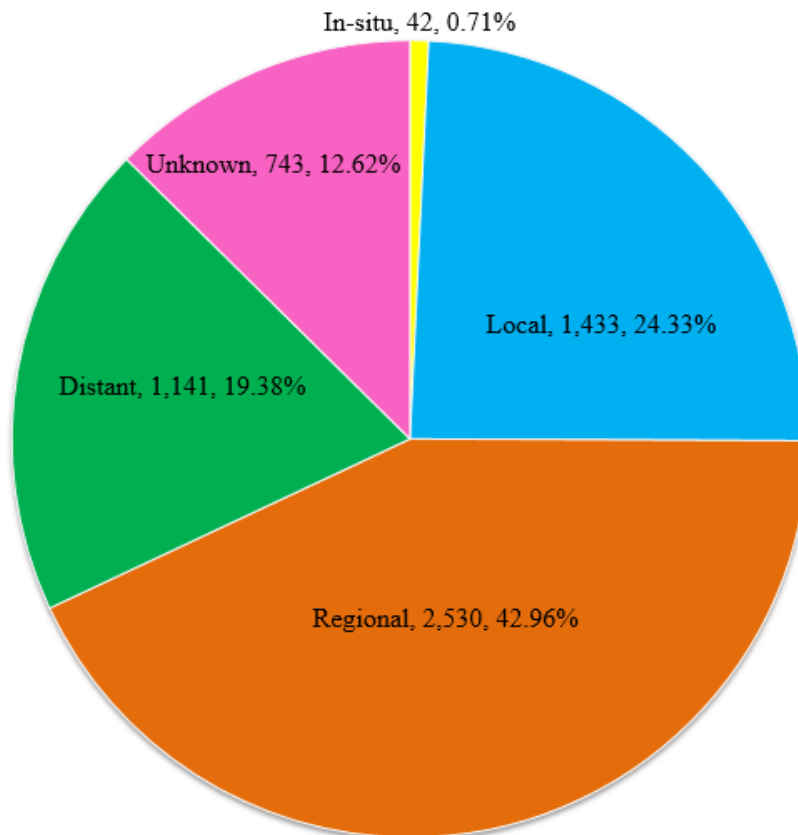
## Summary Stage

The SEER Summary Staging Manual-2000 Codes and Coding Instructions were used to describe how far the tumor had spread from the organ or the site of origin. This manual consists of a one digit hierarchical code for each and every site. All analytical cases (Class of Case 0, 1, 2), were included to generate results. The cancer data for the year 2017 reflects that there were 0.75% in situ cases, 24.33% localized cancers, 42.96% regional cases, 19.38% distant, and there were 12.62% cases in which the summary stage was unknown.

**Table 10. Classification of patients according to the SEER summary stage, from Jan. 2017 to Dec. 2017.**

<b>SEER Summary Stage</b>	<b>Count</b>	<b>Percentage</b>
In situ	42	0.71
Local	1,433	24.33
Regional	2,530	42.96
Distant	1,141	19.38
Unknown	743	12.62
<b>Total</b>	<b>5,889</b>	<b>100.00</b>

**Figure 9. Classification according to the SEER Summary Stage, from Jan. 2017 to Dec. 2017.**



Data Source: Cancer Registry & Clinical Data Management, SKMCH&RC

## Grade/Differentiation/Immunophenotype

The International Classification of Diseases for Oncology, Third Edition (ICD-O-3), codes and guidelines have been used to categorize grade/differentiation/immunophenotype. All analytical cases (Class of Case 0, 1, 2), were included to generate results.

**Table 11. Grade/differentiation/immunophenotype of cancers from Jan. 2017 to Dec. 2017.**

<b>Grade/Differentiation/Immunophenotype</b>	<b>Count</b>	<b>Percentage</b>
Grade I	441	7.49
Grade II	1,745	29.63
Grade III	1,314	22.31
Grade IV	98	1.66
T-cell	16	0.27
B-cell	198	3.36
Grade/differentiation/immunophenotype not determined, not stated, or not applicable	2077	35.27
<b>Total</b>	<b>5,889</b>	<b>100.00</b>

## SUPPLEMENTAL INFORMATION

Table 12 depicts the results stratified by primary site, age-group, and gender. According to this, cancers of the breast, colon, rectum, anal canal and anus, esophagus, lymphoma and leukemia are the commonest systems/site(s) for malignancies seen at SKMCH&RC. Table 13 shows the results stratified by gender, primary site, and Morphology.

**Table 12. Distribution by gender, primary malignant site, and 5-year age-group, 2017**

**FEMALES**

ICD-O-3 Code*	Primary Site	0-	5-	10-	15-	20-	25-	30-	35-	40-	45-	50-	55-	60-	65-	70-	75-	80-	85+	Total
C00	Lip	0	0	0	0	0	0	0	0	0	1	0	2	2	2	0	0	0	0	7
C01-C02	Tongue	0	0	0	0	1	1	1	6	2	5	3	9	6	0	0	0	0	0	34
C03	Gum	0	0	0	0	0	1	0	0	0	1	1	3	0	0	0	1	0	0	7
C04-C06	Floor and other parts of mouth	0	0	0	0	0	0	0	0	3	6	3	5	0	2	1	2	0	0	22
C07-C08	Salivary gland	0	0	0	1	7	2	2	5	3	5	0	0	2	0	0	0	0	0	27
C09-C10	Tonsil & oropharynx	0	0	0	0	0	0	0	0	0	0	1	0	1	0	0	0	0	0	2
C11	Nasopharynx	0	0	0	1	6	5	6	4	4	4	0	1	1	1	0	0	0	0	33
C12-C13	Pyiform sinus & Hypopharynx	0	0	0	0	0	1	1	0	2	2	0	0	0	1	0	0	0	0	7
C14	Other & ill-defined lip, oral cavity, pharynx	0	0	0	0	0	0	0	0	0	1	0	0	1	0	0	0	0	0	2
C15	Esophagus	0	0	0	0	1	6	2	14	15	21	21	29	16	5	6	0	2	0	138
C16	Stomach	0	0	0	1	1	2	3	6	6	13	12	17	9	3	0	0	0	0	73
C17	Small intestine	0	0	0	0	0	0	0	2	1	3	2	2	1	0	0	0	0	0	11
C18	Colon	0	0	0	0	0	2	2	4	3	9	3	11	5	4	2	1	0	0	46
C19-C21	Rectosigmoid, rectum, anal canal, and anus	0	0	0	0	5	8	11	13	6	9	2	7	9	3	6	4	1	0	84
C22	Liver & intrahepatic bile duct	0	0	0	0	0	0	0	1	2	4	6	12	12	4	6	1	0	0	48
C23-C24	Gall bladder & extrahepatic bile duct	0	0	0	0	1	1	1	1	7	3	8	12	8	7	5	2	0	0	56
C25	Pancreas	0	0	0	0	0	0	0	6	3	2	6	10	9	3	3	3	1	0	46
C30-C31	Nasal cavity, middle ear and acc. sinuses	0	0	0	1	0	1	0	3	0	1	0	1	0	0	0	0	0	0	7
C32	Larynx	0	0	0	0	0	0	0	0	1	1	2	1	0	0	0	0	0	0	5
C33-C34	Trachea, bronchus & lung	0	0	0	0	0	2	2	3	1	6	3	5	2	2	4	0	0	1	31
C37-C38	Thymus, heart, mediastinum & pleura	0	0	0	0	0	0	0	0	0	0	0	0	0	0	0	0	0	0	0
C40-C41	Bone & articular cartilage	2	11	7	7	1	0	2	0	2	0	1	0	0	0	0	0	0	0	33
C44	Skin	0	0	0	3	3	4	4	3	4	9	10	13	11	7	17	7	3	0	98
C47	Peripheral & autoimmune nervous system	3	0	0	0	0	0	1	0	0	0	0	0	0	0	0	0	0	0	4
C49	Connective & soft tissue	3	0	2	1	5	4	7	3	3	1	4	3	4	4	2	2	0	0	48
C50	Breast	0	0	0	0	8	52	135	206	205	255	185	76	61	26	19	7	7	0	1242
C51-C52	Vulva & vagina	0	0	0	0	0	0	1	0	1	1	0	2	2	1	1	0	0	0	9
C53	Cervix uteri	0	0	0	1	1	0	13	18	25	34	29	29	23	12	5	6	1	0	197
C54	Corpus uteri	0	0	0	0	0	1	5	6	9	7	17	23	33	21	6	3	1	1	133
C55	Uterus	0	0	0	0	0	1	0	1	6	1	3	1	1	2	2	0	1	0	19
C56-C57	Ovary & other female genital organs	0	2	4	8	15	17	6	15	13	18	4	2	2	0	0	1	1	0	108
C58	Placenta	0	0	0	0	0	0	0	1	0	0	0	0	0	0	0	0	0	0	1
C64-C66	Kidney & other urinary organ	16	6	2	0	0	2	1	6	1	3	3	6	7	5	0	0	0	0	58
C67	Urinary bladder	0	0	0	0	0	0	0	1	1	1	4	5	1	1	1	0	0	0	15
C69	Eye	24	0	1	1	0	0	1	0	0	0	0	0	0	0	0	0	0	0	27
C70-C71	Brain	1	0	0	1	10	2	6	11	12	3	3	3	3	1	0	0	0	0	56
C72	Other parts of nervous system	0	0	0	1	0	1	1	0	0	1	1	0	0	0	0	0	0	0	5
C73	Thyroid gland	0	0	1	5	9	19	8	13	13	8	6	6	3	0	2	1	0	0	94
C74-C75	Endocrine gland and related structure	1	0	0	0	0	0	1	0	0	0	0	1	0	0	0	0	0	0	3
C76	Other and ill-defined sites	5	0	0	0	0	0	0	1	0	1	0	0	0	0	0	1	0	0	8
C80	Unknown primary	0	0	0	0	1	0	0	2	0	2	3	0	3	0	0	0	0	0	11
M9650-M9667	Hodgkin lymphoma	6	14	0	16	17	14	15	8	2	1	1	0	0	0	0	0	0	0	94
M9590-91, 967-972	Non-Hodgkin lymphoma	7	8	0	0	4	0	2	4	4	1	1	2	1	3	0	0	0	0	37
M9731-M9732	Multiple myeloma & immuno. neoplasms	0	0	0	0	0	0	0	0	1	0	0	0	1	1	0	0	0	0	3
M982-M983	Lymphoid leukemia	30	0	0	1	2	4	0	1	4	4	3	13	0	0	0	0	0	0	62
M984-M993	Myeloid leukemia	2	0	3	3	5	2	4	4	0	1	2	0	1	1	0	0	0	0	28
C42.0, C42.2-4	Other lymphatic & hematopoietic tissue	2	0	1	1	0	0	0	0	0	1	0	1	1	0	0	0	0	0	7
~	Other reportable CNS neoplasms	0	0	1	1	6	7	6	5	2	8	3	0	1	1	0	0	0	0	41
	<b>Total</b>	<b>102</b>	<b>41</b>	<b>22</b>	<b>54</b>	<b>109</b>	<b>162</b>	<b>250</b>	<b>377</b>	<b>367</b>	<b>458</b>	<b>356</b>	<b>313</b>	<b>243</b>	<b>123</b>	<b>88</b>	<b>42</b>	<b>18</b>	<b>2</b>	<b>3127</b>

## MALES

ICD-O-3 Code	Primary Site	0-	5-	10-	15-	20-	25-	30-	35-	40-	45-	50-	55-	60-	65-	70-	75-	80-	85+	Total
C00	Lip	0	0	0	0	0	0	1	0	1	0	3	2	2	1	0	0	0	0	10
C01-C02	Tongue	0	0	0	0	0	2	7	5	3	15	8	10	6	4	0	1	1	0	62
C03	Gum	0	0	0	0	0	0	0	0	1	2	2	3	5	2	0	1	0	0	16
C04-C06	Floor and other parts of mouth	0	0	0	0	1	0	4	5	5	7	9	6	7	2	0	1	0	0	47
C07-C08	Salivary gland	0	0	0	4	0	2	3	3	0	4	7	5	4	0	0	1	0	0	33
C9-C10	Tonsil & oropharynx	0	0	0	0	0	0	0	1	2	0	0	0	0	0	0	1	0	0	4
C11	Nasopharynx	0	0	0	1	4	4	5	6	4	8	13	9	3	0	0	0	0	0	57
C12-C13	Pyiform sinus & Hypopharynx	0	0	0	0	0	0	1	2	1	0	1	2	2	1	0	1	0	0	11
C14	Other & ill-defined lip, oral cavity, pharynx	0	0	0	0	0	0	0	0	0	0	0	0	0	0	0	0	0	0	0
C15	Esophagus	0	0	0	0	1	5	4	4	10	18	23	22	17	15	7	2	2	0	130
C16	Stomach	0	0	0	0	1	1	4	6	16	23	28	29	16	10	4	2	0	0	140
C17	Small intestine	0	0	0	0	1	1	0	1	1	1	2	3	2	0	0	1	0	0	13
C18	Colon	0	0	0	1	4	5	8	6	13	11	16	3	12	7	3	1	1	0	91
C19-C21	Rectosigmoid, rectum, anal canal, and anus	0	0	0	4	9	16	13	17	17	20	16	9	14	8	6	7	1	0	157
C22	Liver & intrahepatic bile duct	1	0	0	0	0	1	0	2	3	4	12	12	17	20	11	2	3	0	88
C23-C24	Gall Bladder & extrahepatic bile duct	0	0	0	0	0	1	2	5	2	3	6	10	7	8	5	1	1	0	51
C25	Pancreas	0	0	0	0	0	0	1	3	5	6	7	12	10	4	4	2	4	0	58
C30-C31	Nasal cavity, middle ear and acc. sinuses	0	0	0	2	1	2	1	0	2	1	1	2	3	1	0	0	1	0	17
C32	Larynx	0	0	0	0	0	1	2	2	1	3	7	7	12	2	0	0	0	0	37
C33-C34	Bronchus & Lung	0	0	0	0	1	2	2	7	9	9	16	18	19	20	18	12	2	0	135
C37-C38	Thymus, heart, mediastinum & pleura	0	0	0	0	0	0	0	0	0	0	0	0	0	0	0	0	0	0	0
C40-C41	Bone & articular cartilage	2	9	14	18	1	1	0	3	0	1	0	1	0	0	0	0	0	0	50
C44	Skin	0	0	0	0	7	2	5	9	7	9	12	8	14	20	22	9	6	3	133
C47	Peripheral. & autoimmune nervous system	1	0	0	0	0	0	0	0	0	0	0	0	0	0	0	0	0	0	1
C48	Retroperitoneum and Peritoneum	0	0	0	0	0	2	0	0	0	0	0	0	0	0	0	0	0	0	2
C49	Connective & soft tissue	3	5	0	7	3	5	4	5	3	5	5	4	3	3	1	1	1	1	59
C50	Breast	0	0	0	0	0	0	0	0	0	1	0	0	1	0	0	0	0	0	2
C60	Penis	0	0	0	0	0	0	0	0	0	0	1	0	1	0	0	0	0	0	2
C61	Prostate	0	0	0	0	0	0	0	0	0	7	17	32	77	77	86	15	1	0	312
C62	Testis	10	0	0	6	30	35	36	20	17	9	9	4	1	1	0	0	0	0	178
C63	Other & unspecified male genital organs	0	0	0	0	0	0	0	0	0	0	0	0	1	0	0	0	0	0	1
C64-C66	Kidney & other urinary organ	18	6	1	0	0	0	2	12	10	13	15	6	9	7	4	1	1	0	105
C67	Urinary bladder	0	0	0	0	0	1	2	8	10	19	27	28	6	4	3	2	0	0	110
C68	Other & unspecified urinary organs	0	0	0	0	0	0	0	0	0	0	0	0	0	0	0	0	0	0	0
C69	Eye	20	1	1	0	1	0	0	1	0	0	0	0	0	0	0	0	0	0	24
C70-C71	Brain	0	0	0	5	12	16	16	17	17	7	5	3	7	2	3	0	2	0	112
C72	Other parts of nervous system	0	0	0	0	0	1	1	0	1	1	0	0	0	0	0	0	0	0	4
C73	Thyroid gland	0	0	0	2	2	6	5	7	1	5	4	1	2	1	1	1	0	0	38
C74-C75	Endocrine gland and related structure	0	1	0	0	1	0	1	1	0	0	1	0	0	0	0	0	0	0	5
C76	Other and ill-defined sites	0	0	0	1	0	0	0	1	0	1	0	0	0	1	0	0	0	0	4
C80	Unknown primary	0	0	0	0	0	2	3	0	0	0	3	0	3	3	0	0	0	0	14
M9650-M9667	Hodgkin lymphoma	17	71	1	14	26	35	25	16	0	0	0	0	0	0	0	1	0	0	206
M9590-91,967-972	Non-Hodgkin lymphoma	16	30	0	3	5	2	8	10	1	1	4	3	1	2	1	0	1	0	88
M9731-M9732	Multiple myeloma & immuno. neoplasms	0	0	0	0	0	0	0	0	4	0	2	0	0	0	0	0	0	0	6
M982-M983	Lymphoid leukemia	49	3	0	12	25	5	0	2	3	7	13	16	2	0	0	0	0	0	137
M984-M993	Myeloid leukemia	3	4	8	6	3	9	4	7	0	1	1	0	0	1	0	0	0	0	47
M994	Other leukemia	0	0	0	0	1	0	0	0	0	0	0	1	0	0	0	0	0	0	2
C42.0, C42.2-4	Other lymphatic & hematopoietic tissue	4	0	1	0	2	0	0	1	2	0	3	0	0	1	0	0	0	0	14
~	Other reportable CNS neoplasms	0	0	0	1	7	9	4	10	9	5	4	2	1	1	2	1	0	0	56
	<b>Total</b>	<b>144</b>	<b>130</b>	<b>26</b>	<b>87</b>	<b>149</b>	<b>172</b>	<b>174</b>	<b>205</b>	<b>181</b>	<b>227</b>	<b>303</b>	<b>273</b>	<b>287</b>	<b>229</b>	<b>181</b>	<b>67</b>	<b>28</b>	<b>4</b>	<b>2869</b>

\*Diseases are listed according to the International Classification of Diseases for Oncology, Third edition (ICD-O-3) codes.

~Non-malignant primary intracranial and CNS tumors are also included in the count.

**Table 13 - Morphology, site, and gender, 2017**

ICD-O-3 Code	Morphology	Female	Male	Total
C00 Lip	Squamous Cell Carcinoma, Nos	6	8	14
	Squamous Cell Carcinoma, Keratinizing, Nos	1	1	2
	Adenoid Cystic Carcinoma	0	1	1
C01-02 Tongue	Squamous Cell Carcinoma, Nos	29	56	85
	Squamous Cell Carcinoma, Keratinizing, Nos	4	6	10
	Adenoid Cystic Carcinoma	1	0	1
C03-06 Gum, FOM, palate, other & unspecified parts of mouth	Squamous Cell Carcinoma, Nos	18	45	63
	Squamous Cell Carcinoma, Keratinizing, Nos	4	7	11
	Adenoid Cystic Carcinoma	2	8	10
	Mucoepidermoid Carcinoma	3	0	3
	Polymorphous Low Grade Adenocarcinoma	1	1	2
	Carcinoma, Nos	1	0	1
	Neoplasm, Malignant	0	1	1
	Verrucous Carcinoma, Nos	0	1	1
C07-08 Parotid and other major Salivary glands	Mucoepidermoid Carcinoma	14	11	25
	Adenoid Cystic Carcinoma	8	7	15
	Carcinoma, Nos	3	9	12
	Squamous Cell Carcinoma, Nos	1	3	4
	Acinar Cell Carcinoma	0	2	2
	Carcinoma In Pleomorphic Adenoma	1	0	1
	Pleomorphic Carcinoma	0	1	1
C09-C10 Tonsil & oropharynx	Squamous Cell Carcinoma, Nos	2	2	4
	Mucoepidermoid Carcinoma	0	1	1
	Squamous Cell Carcinoma, Keratinizing, Nos	0	1	1
C11 Nasopharynx	Carcinoma, Undifferentiated, Nos	21	33	54
	Carcinoma, Nos	8	22	30
	Squamous Cell Carcinoma, Nos	2	1	3
	Adenoid Cystic Carcinoma	1	0	1
	Squamous Cell Carcinoma, Large Cell, Nonkeratinizing, Nos	1	0	1
	Squamous Cell Carcinoma, Keratinizing, Nos	0	1	1
C12-C13 Pyriform sinus &	Squamous Cell Carcinoma, Nos	5	9	14

Hypopharynx	Squamous Cell Carcinoma, Keratinizing, Nos	2	1	3
	Pseudosarcomatous Carcinoma	0	1	1
C14 Other & ill-defined sites in lip, oral cavity & pharynx	Squamous Cell Carcinoma, Nos	2	0	2
C15 Esophagus	Squamous Cell Carcinoma, Nos	123	106	229
	Squamous Cell Carcinoma, Keratinizing, Nos	11	9	20
	Adenocarcinoma, Nos	1	10	11
	Signet Ring Cell Carcinoma	1	3	4
	Squamous Cell Carcinoma, Large Cell, Nonkeratinizing, Nos	1	0	1
	Squamous Cell Carcinoma, Small Cell, Nonkeratinizing	1	0	1
	Pseudosarcomatous Carcinoma	0	1	1
	Small Cell Carcinoma, Nos	0	1	1
C16 Stomach	Adenocarcinoma, Nos	29	76	105
	Signet Ring Cell Carcinoma	27	43	70
	Gastrointestinal Stromal Sarcoma	6	10	16
	Squamous Cell Carcinoma, Nos	6	5	11
	Adenocarcinoma In Adenomatous Polyp	1	1	2
	Adenocarcinoma In Tubulovillous Adenoma	1	1	2
	Adenosquamous Carcinoma	1	1	2
	Neuroendocrine Carcinoma, Nos	0	2	2
	Squamous Cell Carcinoma, Keratinizing, Nos	1	0	1
	Carcinoma, Nos	1	0	1
	Mucinous Adenocarcinoma	0	1	1
C17 Small intestine	Adenocarcinoma, Nos	6	5	11
	Neuroendocrine Carcinoma, Nos	3	4	7
	Gastrointestinal Stromal Sarcoma	2	3	5
	Signet Ring Cell Carcinoma	0	1	1
C18 Colon	Adenocarcinoma, Nos	33	60	93
	Mucinous Adenocarcinoma	3	12	15
	Adenocarcinoma In Tubulovillous Adenoma	4	10	14
	Signet Ring Cell Carcinoma	4	6	10
	Neoplasm, Malignant	1	2	3
	Neuroendocrine Carcinoma, Nos	1	0	1
	Adenocarcinoma In Adenomatous Polyp	0	1	1

C19-C21 Rectosigmoid junction, rectum, anal canal, and anus	Adenocarcinoma, Nos	50	83	133
	Signet Ring Cell Carcinoma	19	35	54
	Adenocarcinoma In Tubulovillous Adenoma	6	19	25
	Mucinous Adenocarcinoma	2	7	9
	Squamous Cell Carcinoma, Nos	2	5	7
	Gastrointestinal Stromal Sarcoma	1	4	5
	Malignant Melanoma, Nos	1	2	3
	Neuroendocrine Carcinoma, Nos	2	0	2
	Adenocarcinoma In Adenomatous Polyp	1	0	1
	Squamous Cell Carcinoma, Keratinizing, Nos	0	1	1
	Squamous Cell Carcinoma, Large Cell, Nonkeratinizing, Nos	0	1	1
C22 Liver & intrahepatic bile ducts	Hepatocellular Carcinoma, Nos	40	82	122
	Cholangiocarcinoma	5	3	8
	Neuroendocrine Carcinoma, Nos	2	0	2
	Carcinoma, Nos	1	0	1
	Adenocarcinoma, Nos	0	1	1
	Hepatoblastoma	0	1	1
	Klatskin Tumor	0	1	1
C23-C24 Gallbladder & other and unspecified parts of biliary tract	Adenocarcinoma, Nos	40	36	76
	Neoplasm, Malignant	5	0	5
	Neuroendocrine Carcinoma, Nos	4	1	5
	Cholangiocarcinoma	1	4	5
	Carcinoma, Nos	2	2	4
	Mucinous Adenocarcinoma	1	2	3
	Signet Ring Cell Carcinoma	1	2	3
	Squamous Cell Carcinoma, Nos	1	1	2
	Adenocarcinoma In Tubulovillous Adenoma	0	2	2
	Klatskin Tumor	1	0	1
	Adenocarcinoma, Intestinal Type	0	1	1
C25 Pancreas	Adenocarcinoma, Nos	34	43	77
	Neuroendocrine Carcinoma, Nos	4	4	8
	Neoplasm, Malignant	2	6	8
	Mucinous Adenocarcinoma	3	4	7
	Carcinoma, Nos	2	1	3



	Signet Ring Cell Carcinoma	1	0	1
C30-C31 Nasal cavity, middle ear and accessory sinuses	Squamous Cell Carcinoma, Nos	1	5	6
	Adenoid Cystic Carcinoma	3	1	4
	Olfactory Neuroblastoma	1	2	3
	Carcinoma, Nos	0	3	3
	Neuroendocrine Carcinoma, Nos	1	1	2
	Adenocarcinoma, Intestinal Type	0	2	2
	Ewing Sarcoma	1	0	1
	Carcinoma, Undifferentiated, Nos	0	1	1
	Clear Cell Adenocarcinoma, Nos	0	1	1
	Squamous Cell Carcinoma, Keratinizing, Nos	0	1	1
C32 Larynx	Squamous Cell Carcinoma, Nos	4	31	35
	Squamous Cell Carcinoma In Situ, Nos	1	0	1
	Pseudosarcomatous Carcinoma	0	1	1
	Squamous Cell Carcinoma, Keratinizing, Nos	0	5	5
C33-C34 Trachea, bronchus and lung	Adenocarcinoma, Nos	11	37	48
	Squamous Cell Carcinoma, Nos	3	41	44
	Small Cell Carcinoma, Nos	2	14	16
	Non-Small Cell Carcinoma	2	11	13
	Neuroendocrine Carcinoma, Nos	3	5	8
	Acinar Cell Carcinoma	2	3	5
	Carcinoma, Nos	0	4	4
	Atypical Carcinoid Tumor	1	1	2
	Mucinous Adenocarcinoma	1	1	2
	Neoplasm, Malignant	1	1	2
	Ewing Sarcoma	0	2	2
	Adenosquamous Carcinoma	0	1	1
	Mucoepidermoid Carcinoma	0	1	1
C37-C38 Thymus, heart, mediastinum & pleura	Thymoma, Type B2, Malignant	3	4	7
	Thymoma, Malignant, Nos	0	3	3
	Thymoma, Type B3, Malignant	1	1	2
	Thymic Carcinoma, Nos	1	0	1
	Germinoma	0	1	1
	Seminoma, Nos	0	1	1

	Small Cell Carcinoma, Nos	0	1	1
	Thymoma, Type Ab, Malignant	0	1	1
	Yolk Sac Tumor	0	1	1
C40-41 Bones, Joints & Articular Cartilage	Ewing Sarcoma	16	17	33
	Osteosarcoma, Nos	10	21	31
	Chondrosarcoma, Nos	4	5	9
	Chondroblastic Osteosarcoma	1	3	4
	Telangiectatic Osteosarcoma	0	2	2
	Clear Cell Chondrosarcoma	1	0	1
	Undifferentiated Sarcoma	1	0	1
	Neoplasm, Malignant	0	1	1
	Synovial Sarcoma, Nos	0	1	1
C42 Hematopoietic and reticuloendothelial system	Precursor B-Cell Lymphoblastic Leukemia	39	91	130
	B-Cell Chronic Lymphocytic Leukemia/Small Lymphocytic Lymphoma	24	41	65
	Chronic Myelogenous Leukemia, Bcr/Abl Positive	12	24	36
	Chronic Myeloid Leukemia, Nos	10	19	29
	Multiple Myeloma	2	6	8
	Acute Myeloid Leukemia, Nos	4	2	6
	Langerhans Cell Histiocytosis, Disseminated	1	5	6
	Precursor T-Cell Lymphoblastic Leukemia	0	5	5
	Langerhans Cell Histiocytosis, Nos	3	1	4
	Acute Leukemia, Nos	1	1	2
	Essential Thrombocythemia	1	1	2
	Myeloproliferative Neoplasm,Unclassifiable	1	1	2
	Myelosclerosis With Myeloid Metaplasia	0	2	2
	Polycythemia Vera	0	2	2
	Acute Myeloid Leukemia, Minimal Differentiation Fab M0	1	0	1
	Plasmacytoma, Nos	1	0	1
	Acute Promyelocytic Leukemia	0	1	1
	Follicular Dendritic Cell Sarcoma	0	1	1
	Hairy Cell Leukemia	0	1	1
	Myelodysplastic Syndrome, Nos	0	1	1
	Precursor Cell Lymphoblastic Leukemia, Nos	0	1	1

C44 Skin	Squamous Cell Carcinoma, Nos	26	49	75
	Basal Cell Carcinoma, Nodular	28	28	56
	Basal Cell Carcinoma, Nos	15	22	37
	Malignant Melanoma, Nos	13	13	26
	Squamous Cell Carcinoma, Keratinizing, Nos	3	7	10
	Dermatofibrosarcoma, Nos	4	2	6
	Sebaceous Adenocarcinoma	2	2	4
	Adenoid Cystic Carcinoma	1	1	2
	Basosquamous Carcinoma	1	1	2
	Squamous Cell Carcinoma In Situ, Nos	1	1	2
	Basaloid Squamous Cell Carcinoma	0	2	2
	Kaposi Sarcoma	0	2	2
	Malignant Myoepithelioma	1	0	1
	Nodular Melanoma	1	0	1
	Pseudosarcomatous Carcinoma	1	0	1
	Skin Appendage Carcinoma	1	0	1
	Carcinoma In Situ, Nos	0	1	1
	Squamous Cell Carcinoma, Adenoid	0	1	1
Trichilemmocarcinoma	0	1	1	
C47 Periph. nerves & auto-immune N.S.	Neuroblastoma, Nos	2	1	3
	Ganglioneuroblastoma	1	0	1
	Malignant Peripheral Nerve Sheath Tumor	1	0	1
C48 Retroperitoneum & Peritoneum	Choriocarcinoma, Nos		1	1
	Embryonal Carcinoma, Nos		1	1
C49 Connective, subcutaneous & other soft tissues	Synovial Sarcoma, Nos	7	11	18
	Undifferentiated Sarcoma	8	6	14
	Ewing Sarcoma	1	7	8
	Fibromyxosarcoma	4	3	7
	Spindle Cell Sarcoma	2	5	7
	Pleomorphic Liposarcoma	4	2	6
	Myxoid Liposarcoma	3	2	5
	Synovial Sarcoma, Biphasic	3	2	5
	Embryonal Rhabdomyosarcoma, Nos	2	3	5
	Leiomyosarcoma Nos	1	4	5

	Sarcoma, Nos	3	1	4
	Clear Cell Sarcoma, Nos	2	1	3
	Rhabdomyosarcoma, Nos	2	1	3
	Pleomorphic Rhabdomyosarcoma, Adult Type	0	3	3
	Dedifferentiated Liposarcoma	1	1	2
	Epithelioid Sarcoma	1	1	2
	Giant Cell Sarcoma	1	1	2
	Liposarcoma, Nos	1	1	2
	Alveolar Soft Part Sarcoma	1	0	1
	Synovial Sarcoma, Spindle Cell	1	0	1
	Alveolar Rhabdomyosarcoma	0	1	1
	Hemangiopericytoma, Malignant	0	1	1
	Liposarcoma, Well Differentiated	0	1	1
	Malignant Peripheral Nerve Sheath Tumor	0	1	1
C50 Breast	Infiltrating Duct Carcinoma, Nos	1070	1	1071
	Lobular Carcinoma, Nos	73	0	73
	Infiltrating Duct Mixed With Other Types Of Carcinoma	16	0	16
	Carcinoma, Nos	11	0	11
	Metaplastic Carcinoma, Nos	11	0	11
	Infiltrating Duct And Lobular Carcinoma	10	0	10
	Ductal Carcinoma In Situ, Solid Type	8	0	8
	Mucinous Adenocarcinoma	7	0	7
	Comedocarcinoma, Noninfiltrating	5	1	6
	Phyllodes Tumor, Malignant	5	0	5
	Cribriform Carcinoma In Situ	4	0	4
	Paget Disease And Infiltrating Duct Carcinoma Of Breast	4	0	4
	Inflammatory Carcinoma	3	0	3
	Intraductal Carcinoma, Noninfiltrating, Nos	3	0	3
	Neoplasm, Malignant	3	0	3
	Papillary Carcinoma, Nos	3	0	3
	Intraductal Micropapillary Carcinoma	2	0	2
	Adenoid Cystic Carcinoma	1	0	1
	Apocrine Adenocarcinoma	1	0	1

	Intracystic Carcinoma, Nos	1	0	1
	Paget Disease, Mammary	1	0	1
C51-C52 Vulva & Vagina	Squamous Cell Carcinoma, Keratinizing, Nos	4		4
	Squamous Cell Carcinoma, Nos	3		3
	Clear Cell Adenocarcinoma, Nos	1		1
	Squamous Cell Carcinoma, Large Cell, Nonkeratinizing, Nos	1		1
C53 Cervix uteri	Squamous Cell Carcinoma, Keratinizing, Nos	54		54
	Squamous Cell Carcinoma, Nos	48		48
	Squamous Cell Carcinoma, Large Cell, Nonkeratinizing, Nos	41		41
	Adenocarcinoma, Nos	13		13
	Adenosquamous Carcinoma	6		6
	Carcinoma, Nos	6		6
	Adenocarcinoma, Endocervical Type	5		5
	Serous Cystadenocarcinoma, Nos	5		5
	Endometrioid Adenocarcinoma, Nos	4		4
	Carcinosarcoma, Nos	3		3
	Neuroendocrine Carcinoma, Nos	3		3
	Clear Cell Adenocarcinoma, Nos	2		2
	Squamous Intraepithelial Neoplasia, Grade Iii	2		2
	Basaloid Squamous Cell Carcinoma	1		1
	Carcinoma In Situ, Nos	1		1
	Carcinoma, Undifferentiated, Nos	1		1
	Choriocarcinoma, Nos	1		1
	Papillary Squamous Cell Carcinoma	1		1
C54 Corpus uteri	Endometrioid Adenocarcinoma, Nos	101		101
	Serous Cystadenocarcinoma, Nos	16		16
	Adenocarcinoma, Nos	5		5
	Carcinosarcoma, Nos	3		3
	Adenosarcoma	1		1
	Carcinoma, Undifferentiated, Nos	1		1
	Choriocarcinoma, Nos	1		1
	Clear Cell Adenocarcinoma, Nos	1		1
	Leiomyosarcoma Nos	1		1

	Mullerian Mixed Tumor	1		1
	Papillary Serous Cystadenocarcinoma	1		1
	Squamous Cell Carcinoma, Nos	1		1
C55 Uterus	Carcinosarcoma, Nos	5		5
	Choriocarcinoma, Nos	4		4
	Leiomyosarcoma Nos	4		4
	Carcinoma, Nos	1		1
	Endometrial Stromal Sarcoma, Nos	1		1
	Endometrioid Adenocarcinoma, Nos	1		1
	Papillary Serous Cystadenocarcinoma	1		1
	Serous Cystadenocarcinoma, Nos	1		1
	Undifferentiated Sarcoma	1		1
C56 Ovary	Serous Cystadenocarcinoma, Nos	18		18
	Dysgerminoma	17		17
	Endometrioid Adenocarcinoma, Nos	12		12
	Granulosa Cell Tumor, Malignant	9		9
	Clear Cell Adenocarcinoma, Nos	8		8
	Mucinous Adenocarcinoma	7		7
	Mucinous Cystadenocarcinoma, Nos	6		6
	Yolk Sac Tumor	6		6
	Teratoma, Malignant, Nos	5		5
	Mixed Germ Cell Tumor	4		4
	Adenocarcinoma, Nos	3		3
	Neoplasm, Malignant	3		3
	Adenosarcoma	1		1
	Carcinoma, Nos	1		1
	Germinoma	1		1
	Granular Cell Tumor, Malignant	1		1
	Mixed Cell Adenocarcinoma	1		1
	Neuroendocrine Carcinoma, Nos	1		1
	Papillary Carcinoma, Nos	1		1
	Papillary Serous Cystadenocarcinoma	1		1
C57 Other and unspecified female genital organs	Adenocarcinoma, Nos	1		1
	Squamous Cell Carcinoma, Nos	1		1

C58 Placenta	Choriocarcinoma, Nos	1		1
C60 Penis	Squamous Cell Carcinoma, Nos		2	2
C61 Prostate	Adenocarcinoma, Nos		306	306
	Carcinoma, Nos		2	2
	Neuroendocrine Carcinoma, Nos		2	2
	Gastrointestinal Stromal Sarcoma		1	1
	Small Cell Carcinoma, Nos		1	1
C62-63 Testis & other male genital organs	Mixed Germ Cell Tumor		79	79
	Seminoma, Nos		57	57
	Yolk Sac Tumor		18	18
	Embryonal Carcinoma, Nos		8	8
	Teratoma, Malignant, Nos		7	7
	Germ Cell Tumor, Nonseminomatous		2	2
	Neoplasm, Malignant		2	2
	Alveolar Rhabdomyosarcoma		1	1
	Embryonal Rhabdomyosarcoma, Nos		1	1
	Germinoma		1	1
	Hemangiosarcoma		1	1
	Spermatocytic Seminoma		1	1
Squamous Cell Carcinoma, Nos		1	1	
C64-C66 Kidney, renal pelvis and ureter	Renal Cell Carcinoma, Nos	18	63	81
	Nephroblastoma, Nos	24	23	47
	Renal Cell Carcinoma, Chromophobe Type	7	4	11
	Neoplasm, Malignant	1	5	6
	Transitional Cell Carcinoma, Nos	2	2	4
	Papillary Adenocarcinoma, Nos	1	1	2
	Papillary Transitional Cell Carcinoma	1	1	2
	Renal Cell Carcinoma, Sarcomatoid	0	2	2
	Clear Cell Adenocarcinoma, Nos	1	0	1
	Clear Cell Sarcoma, Nos	1	0	1
	Collecting Duct Carcinoma	1	0	1
	Mucinous Adenocarcinoma	1	0	1
	Clear Cell Sarcoma of kidney	0	1	1
	Ewing Sarcoma	0	1	1

	Oxyphilic Adenocarcinoma	0	1	1
	Papillary Carcinoma, Nos	0	1	1
C67 Bladder	Transitional Cell Carcinoma, Nos	8	32	40
	Papillary Transitional Cell Carcinoma	7	75	82
	Adenocarcinoma, Nos	0	1	1
	Squamous Cell Carcinoma, Keratinizing, Nos	0	1	1
	Transitional Cell Carcinoma, Spindle Cell	0	1	1
C69 Eye and Adnexa	Retinoblastoma, Nos	23	19	42
	Retinoblastoma, Differentiated	2	2	4
	Retinoblastoma, Undifferentiated	1	1	2
	Malignant Melanoma, Nos	0	2	2
	Adenoid Cystic Carcinoma	1	0	1
C70-C71 Meninges and brain	Glioma, Malignant	19	36	55
	Astrocytoma, Nos	9	24	33
	Glioblastoma, Nos	9	13	22
	Oligodendroglioma, Nos	3	7	10
	Astrocytoma, Anaplastic	2	8	10
	Oligodendroglioma, Anaplastic	4	5	9
	Ependymoma, Nos	2	5	7
	Meningioma, Malignant	3	3	6
	Meningioma, Nos	2	3	5
	Myxopapillary Ependymoma	1	3	4
	Pilocytic Astrocytoma	1	3	4
	Medulloblastoma, Nos	1	2	3
	Neoplasm, Uncertain Whether Benign Or Malignant	1	2	3
	Atypical Meningioma	0	3	3
	Cavernous Hemangioma	1	1	2
	Gemistocytic Astrocytoma	1	1	2
	Tumor Cells, Uncertain Whether Benign Or Malignant	1	1	2
	Ependymoma, Anaplastic	0	2	2
	Neoplasm, Malignant	0	2	2
	Choroid Plexus Papilloma, Nos	1	0	1
	Dermoid Cyst, Nos	1	0	1



	Ganglioglioma, Nos	1	0	1
	Gliomatosis Cerebri	1	0	1
	Neurilemoma, Nos	1	0	1
	Pleomorphic Xanthoastrocytoma	1	0	1
	Meningothelial Meningioma	0	1	1
	Sarcoma, Nos	0	1	1
C72 Spinal cord, cranial nerves & other parts of CNS	Ependymoma, Nos	2	2	4
	Astrocytoma, Nos	1	2	3
	Neurilemoma, Nos	1	2	3
	Chordoma, Nos	1	0	1
	Oligodendroglioma, Anaplastic	1	0	1
C73 Thyroid	Papillary Carcinoma, Nos	65	27	92
	Follicular Adenocarcinoma, Nos	10	4	14
	Medullary Carcinoma, Nos	7	3	10
	Papillary Carcinoma, Follicular Variant	5	2	7
	Follicular Carcinoma, Minimally Invasive	5	1	6
	Papillary Microcarcinoma	1	1	2
	Papillary Carcinoma, Columnar Cell	1	0	1
C74 Adrenal gland	Adrenal Cortical Carcinoma	1	0	1
	Leiomyosarcoma Nos	1	0	1
	Neuroblastoma, Nos	1	0	1
	Nephroblastoma, Nos	0	1	1
	Pheochromocytoma, Malignant	0	1	1
C75 Other endocrine glands & related structures	Pituitary Adenoma, Nos	27	37	64
	Craniopharyngioma	1	2	3
	Prolactinoma	2	0	2
	Chordoma, Nos	0	1	1
	Germinoma	0	1	1
	Neoplasm, Uncertain Whether Benign Or Malignant	0	1	1
	Pineoblastoma	0	1	1
C76 Other & ill-defined sites	Gastrointestinal Stromal Sarcoma	3	2	5
	Yolk Sac Tumor	4	0	4
	Ewing Sarcoma	1	0	1
	Embryonal Carcinoma, Nos	0	1	1

	Neoplasm, Malignant	0	1	1
C77 Lymph nodes, (NHL,HL)	Hodgkin Lymphoma, Mixed Cellularity, Nos	44	117	161
	Hodgkin Lymphoma, Nodular Sclerosis, Nos	32	40	72
	Burkitt Lymphoma, Nos	11	35	46
	Malignant Lymphoma, Large B-Cell Diffuse Nos	19	26	45
	Hodgkin Lymphoma, Nos	10	29	39
	Hodgkin Lymphoma, Nodular Lymphocyte Predominance	4	10	14
	Hodgkin Lymphoma, Lymphocyte-Rich	3	9	12
	Precursor T-Cell Lymphoblastic Lymphoma	1	7	8
	B-Cell Chronic Lymphocytic Leukemia/Small Lymphocytic Lymphoma	0	7	7
	Anaplastic Large Cell Lymphoma, T Cell And Null Cell Type	2	2	4
	Precursor B-Cell Lymphoblastic Lymphoma	2	2	4
	Malignant Lymphoma, Non-Hodgkin, Nos	1	2	3
	Composite Hodgkin And Non-Hodgkin Lymphoma	0	3	3
	Hodgkin Lymphoma, Nodular Sclerosis, Grade 2	1	1	2
	Mantle Cell Lymphoma	1	1	2
	Angioimmunoblastic T-cell lymphoma	0	1	1
	Marginal Zone B-Cell Lymphoma, Nos	0	1	1
	Mature T-Cell Lymphoma, Nos	0	1	1
C80 Unknown primary site	Neoplasm, Malignant	4	5	9
	Neuroendocrine Carcinoma, Nos	1	4	5
	Carcinoma, Nos	3	0	3
	Mucinous Adenocarcinoma	1	1	2
	Adenocarcinoma, Nos	0	2	2
	Germinoma	1	0	1
	Spindle Cell Carcinoma, Nos	1	0	1
	Embryonal Carcinoma, Nos	0	1	1
	Yolk Sac Tumor	0	1	1
<b>Grand Total</b>		<b>3127</b>	<b>2869</b>	<b>5996</b>

"NOS" is an abbreviation for Not Otherwise Specified