

Shahid Mahmood, Aneel Yousaf, Raqib Faraz, Ain ul Quader, Hina Asif, Adna Atif, Roma Tanveer, Azam Hussain, Ayesha Zafar, Usman Amin, Sabeera Iqbal, and Farhana Badar.

CANCER STATISTICS

This report includes patients who were registered at Shaukat Khanum Memorial Trust (SKMT)-affiliated centres and filed into the Hospital Information System. These comprise the hospitals (the Shaukat Khanum Memorial Cancer Hospital and Research Centre (SKMCH&RC) and associated centres.

Distribution of neoplasms

In one year, from January 1, 2023, to December 31, 2023, a total of 8,657 new neoplasms were registered at the SKMT facilities in Pakistan. Of those, 4,665 (53.9%) were female, and 3,992 (46.1%) males. 987 tumors (11.4%) were diagnosed in children, compared to 7,670 (88.6%) tumors in adults. Patients who were 18 years of age or younger were classified as children, and those who were older than 18 were classified as adults. The stratification of cases by age group and behavior is shown in Table 1.

Table 1. Distribution of neoplasms by behavior and age group, SKMCH&RC, January 1, 2023, to December 31, 2023

Behavior	Age group	Registered patients (8,305)	Reported neoplasm* (8,657)
Malignant[♦]	Adults	6,873	6,950
	Pediatrics	871	971
	Total	7,844	7,921
Benign [€] and uncertain behavior	Adults	642	720
	Pediatrics	14	16
	Total	656	736

* The difference in the number of registered patients and reported neoplasms is attributed to multiple malignancies and benign neoplasms diagnosed in 77 and 80 patients, respectively. Further, 195 patients had both malignant and benign neoplasms simultaneously.

♦ Cases with behavior codes /3 and /2 are considered malignant cases.

€ Cases with behavior codes /0 and /1 are considered benign and with uncertain behavior, respectively.

¥ According to the Facility Oncology Revised Data Standards (FORDS), revised for 2004. Class of Case 00-20 are analytical cases and included in treatment and survival analysis, whereas Class 30-33 are non-analytical cases, usually not included in routine treatment or survival statistics.

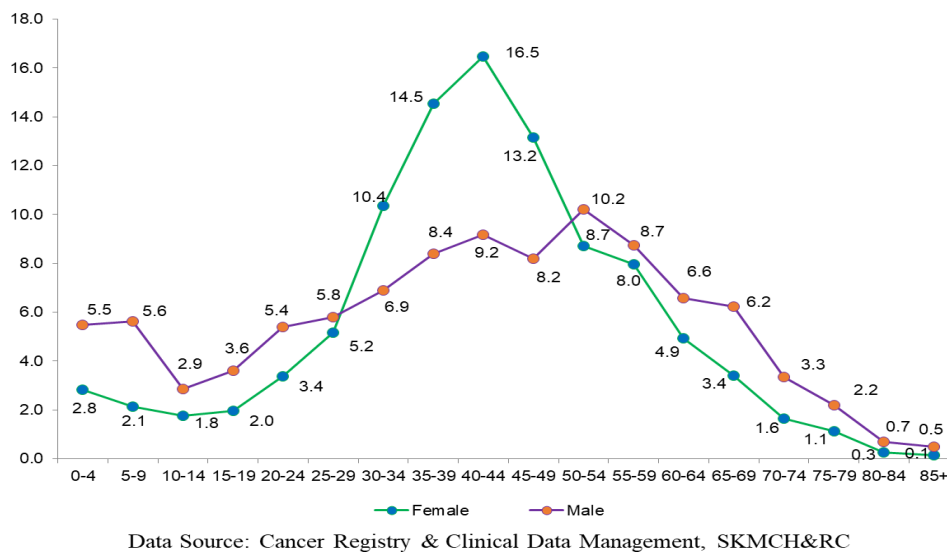
Class of Case

Between January 1, 2023, and December 31, 2023, 7,921 malignant cases were registered at the SKMT facilities in Pakistan. Of those, 7,760 (98.0%) were analytical cases, and 161 (2.0%) were non-analytical cases.

Distribution of malignancies

In the year 2023, a total of 7,921 malignancies were registered at the SKMT facilities in Pakistan. Of those, 3,829 were seen among males and 4,092 were seen among females.

Figure 1. Distribution of malignancies by sex and age group (N=7,921), SKMCH&RC, January 1, 2023, to December 31, 2023



Demographics

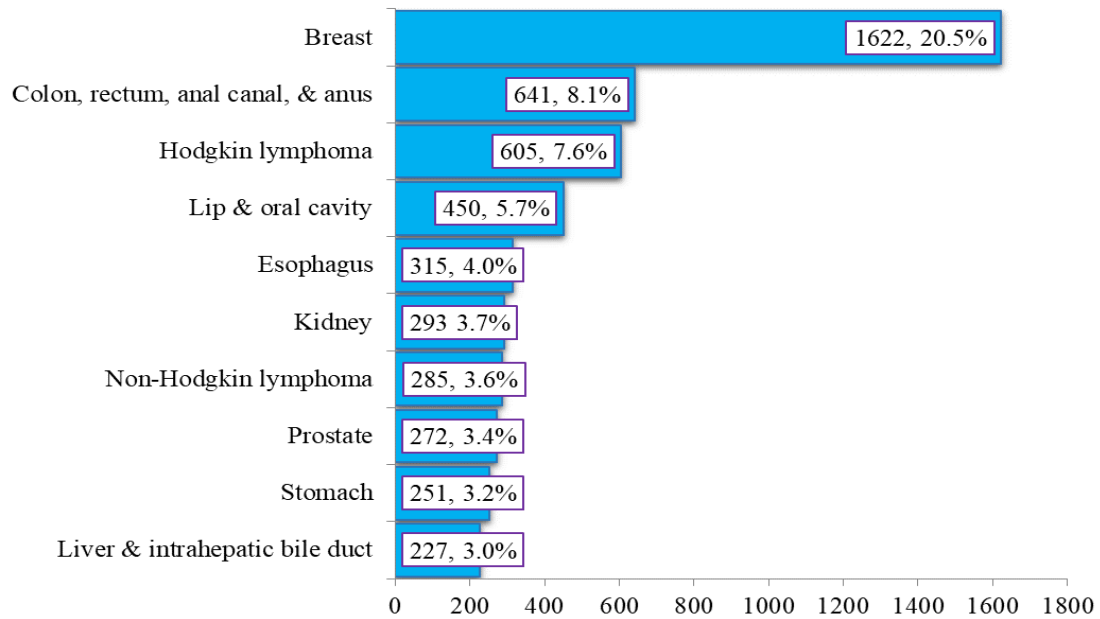
Table 2. Distribution of malignancies (N=7,921) according to the geographic area of residence of the patients, SKMCH&RC, January 1, 2023, to December 31, 2023

Region	Malignancies N=7,921	Percent
Punjab	4,233	53.4
Khyber Pakhtunkhwa (includes FATA ^[1])	2,061	26.0
Sindh	171	2.2
Balochistan	114	1.4
Federal Capital	79	1.0
Gilgit-Baltistan	24	0.3
Azad Jammu and Kashmir	84	1.1
Afghanistan	1,155	14.6
Total	7,921	100.0

^[1] The administrative unit of FATA was included in the province of Khyber Pakhtunkhwa on May 28, 2018

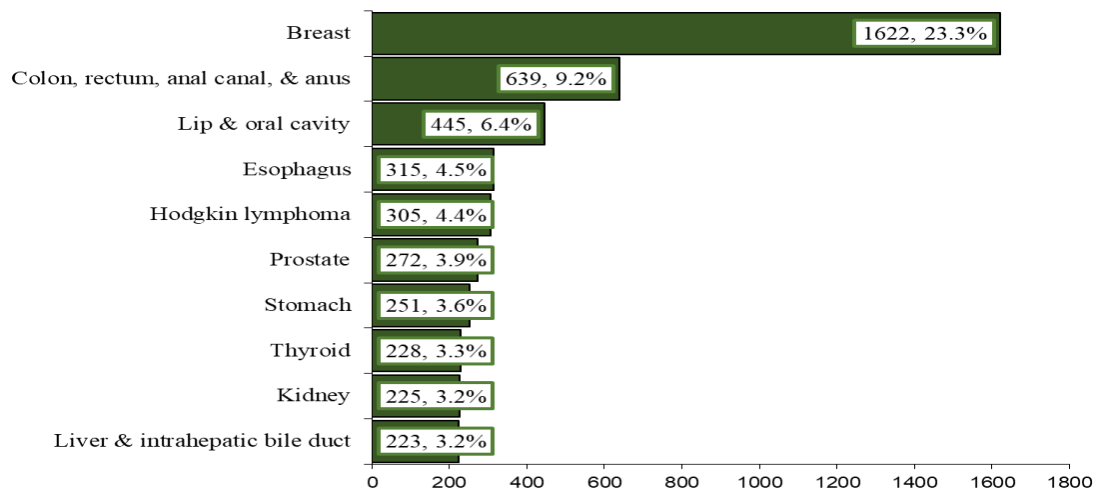
Top ten cancers

Figure 2. Top 10 malignancies among all age groups, both sexes combined (N=7,921), SKMCH&RC, January 1, 2023, to December 31, 2023



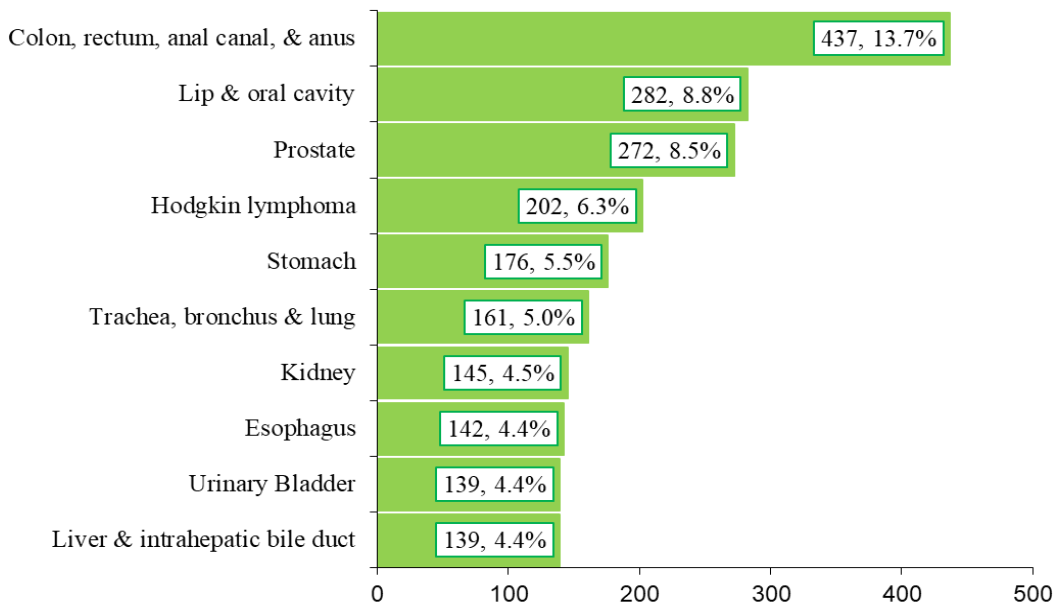
Data Source: Cancer Registry & Clinical Data Management, SKMCH&RC

Figure 3. Top 10 malignancies among adults (> 18 years (N=6,950)), both sexes combined, SKMCH&RC, January 1, 2023, to December 31, 2023



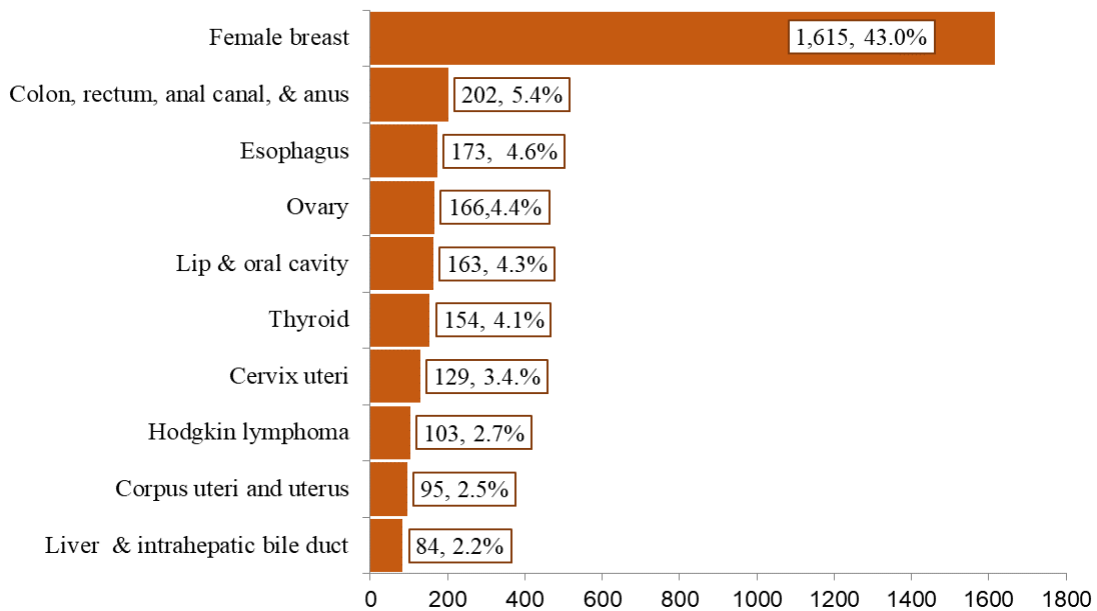
Data Source: Cancer Registry & Clinical Data Management, SKMCH&RC

Figure 4. Top 10 malignancies among adult males (> 18 years (N=3,193)), SKMCH&RC, January 1, 2023, to December 31, 2023



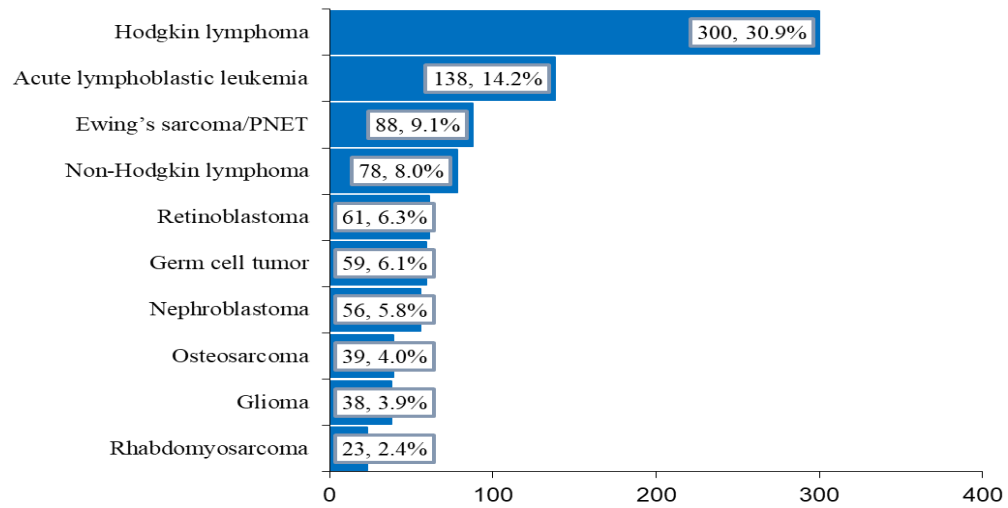
Data Source: Cancer Registry & Clinical Data Management, SKMCH&RC

Figure 5. Top 10 malignancies among adult females (> 18 years (N=3,758)), SKMCH&RC, January 1, 2023, to December 31, 2023



Data Source: Cancer Registry & Clinical Data Management, SKMCH&RC

Figure 6. Top 10 malignancies in children (<= 18 years (N=971)), SKMCH&RC, January 1, 2023, to December 31, 2023. Classification of childhood cancers is based on tumor morphology using the ICD-O-3 coding scheme for childhood cancers.



Data Source: Cancer Registry & Clinical Data Management, SKMCH&RC

Staging

Table 3. Distribution of cancers by the TNM staging method of analytical cancer patients (N=7,760) at SKMCH&RC, January 1, 2023, to December 31, 2023

AJCC Stage	Count	Percentage
Stage 0	98	1.3
Stage I	1,194	15.4
Stage II	2,029	26.1
Stage III	1,863	24.0
Stage IV	1,485	19.1
Unstageable	280	3.6
AJCC stage not defined	811	10.5
Total	7,760	100.0

May 2024

Cancer Registry and Clinical Data Management Section

Shaukat Khanum Memorial Cancer Hospital and Research Centre, Lahore, Pakistan